

# SIMOLEX

---

TILES

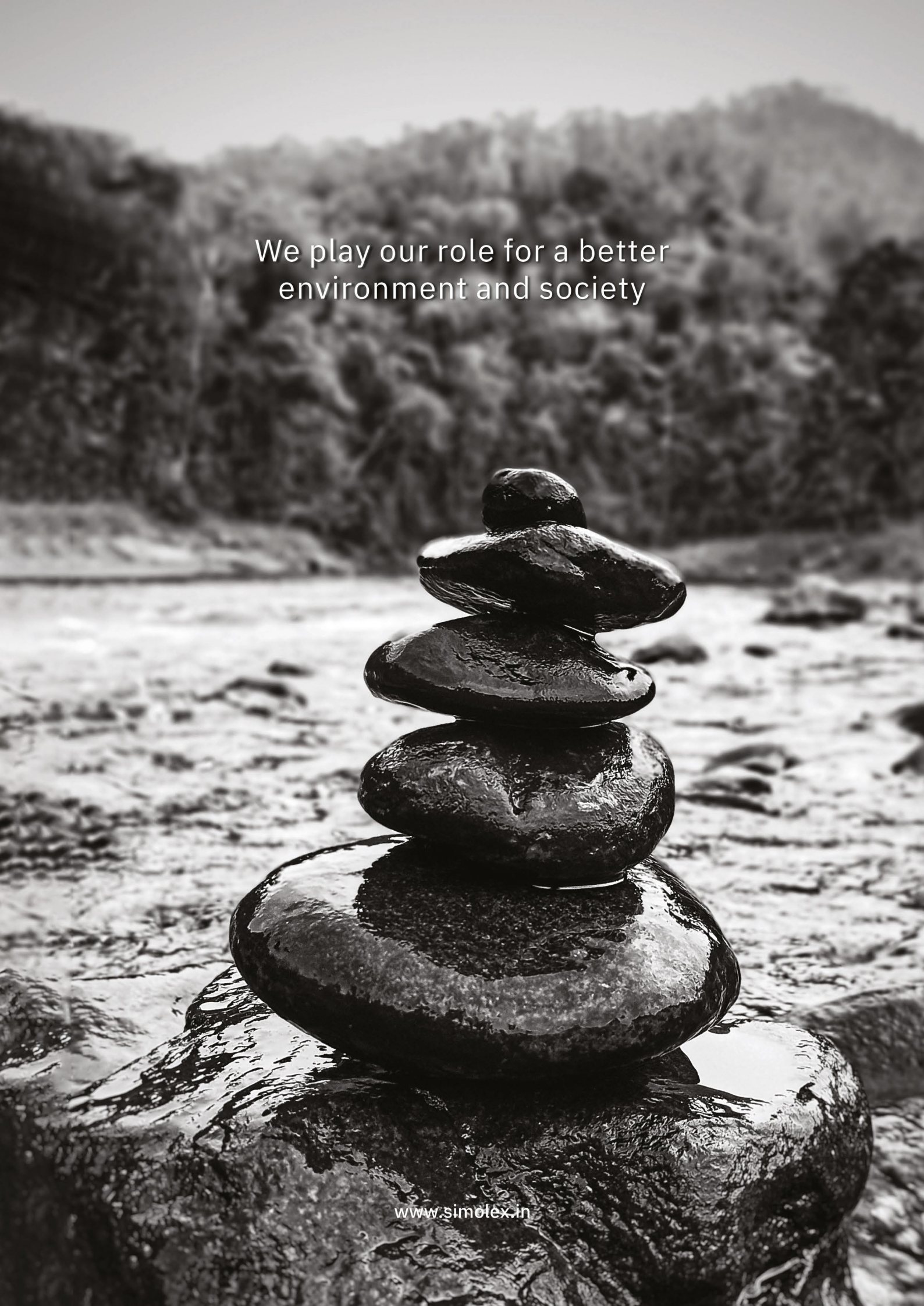


Majestic design

**FULL BODY**

VITRIFIED TILES

15MM THICKNESS



We play our role for a better  
environment and society

# FULL BODY

VITRIFIED TILES

In the untouched beauty of natural quarries, Simolex finds its inspiration. We craft full-body vitrified tiles that capture the raw essence of nature, combining durability with elegance. Every design in our collection tells a story of timeless sophistication, offering endless shades and patterns to suit any space.

At Simolex, sustainability is at the core of our craftsmanship. We have natural punch that suits every ambiance. We ensure our tile-making practices protect the environment, giving back to nature while delivering excellence. When you choose Simolex, you're choosing a blend of artistry, innovation, and conscious living.

# COMPANY INTRO

---

With 16 years of experience in the tiles industry,

Simolex has become a trusted name known for its commitment to quality. Our customer-first approach ensures we prioritize the needs of every client, offering tailored solutions.

As a leading exporter, we proudly serve markets across multiple countries, providing full-body vitrified tiles that combine durability, elegance, and innovation to transform spaces globally.



# THE ORIGIN OF A PURE MATERIAL

---



At Simolex, The Origin of Pure Material begins with the selection of the finest, purest raw materials. We take great pride in using only the highest quality materials, ensuring every tile is a symbol of excellence.

Our full-body vitrified tiles are crafted to perfection, showcasing a stunning natural stone look that reflects the raw beauty of nature.

The NaturalPunch texture brings depth and character to each tile, mimicking the intricate patterns found in stone while maintaining durability and elegance.

With a focus on purity and sustainability, Simolex tiles not only elevate your space but also bring the strength and timeless appeal of natural materials into your home, with a commitment to quality that lasts a lifetime.



**15MM THICKNESS**

**FULL BODY**  
VITRIFIED TILES

## ENDURING BEAUTY

---

At Simolex, we believe that every tile tells a story of strength, beauty, and versatility. Our full-body vitrified tiles come in a range of stunning finishes—matt, polished and the unique Natural Punch texture, each designed to elevate any space. With a size of 600x600 mm and a robust 15mm thickness, these tiles offer unmatched strength and durability.

Whether you're designing a cozy home or a bustling commercial space, our tiles are the perfect choice.

Available in an extensive range of colors, they effortlessly blend with various design themes, from sleek modern aesthetics to timeless classics.

Their versatility makes them ideal for residential spaces, commercial properties, and even high-traffic areas. With Simolex, you're not just choosing tiles; you're investing in a solution that combines beauty, performance, and longevity.



## 600X600 MM

---

This dimension is perfectly designed for versatility, offering a spacious yet compact tile suitable for various applications.

**15MM**  
THICKNESS

**600X600MM**

**FULL BODY**  
VITRIFIED TILES

---

# STONE BISCUIT



**Matt**



STONE BISCUIT

FINISH : MATT

**15MM**  
THICKNESS

**600X600MM**

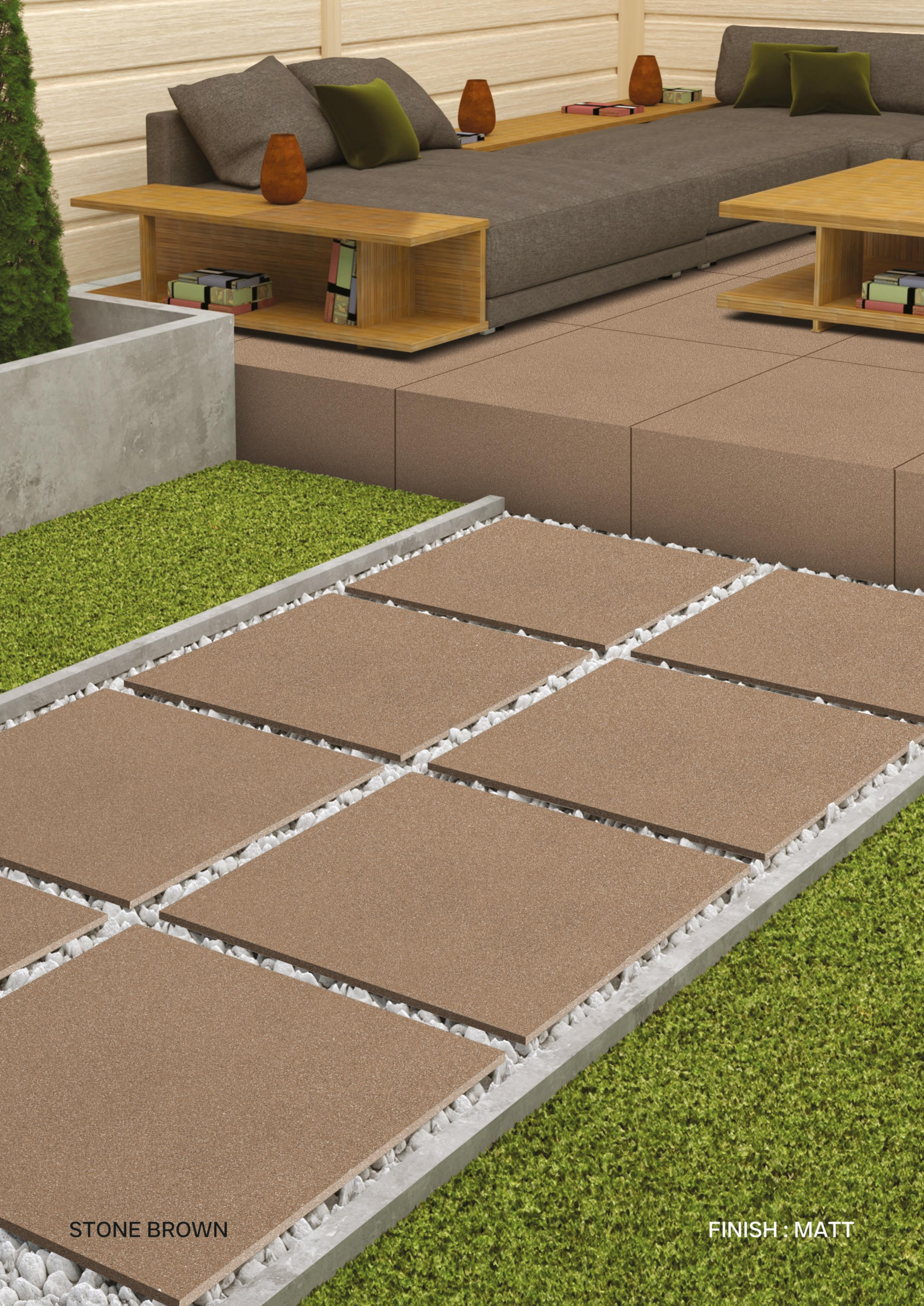
**FULL BODY**  
VITRIFIED TILES

---

**STONE BROWN**



**Matt**



STONE BROWN

FINISH : MATT

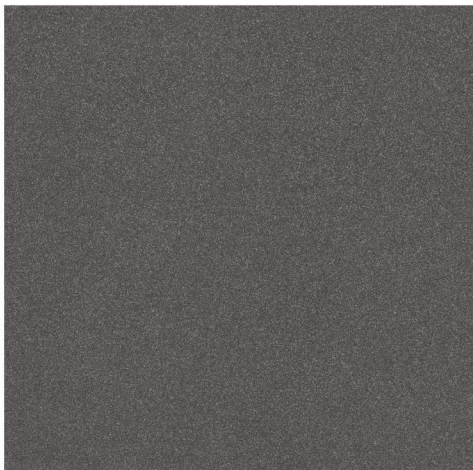
**15MM**  
THICKNESS

**600X600MM**

**FULL BODY**  
VITRIFIED TILES

---

# STONE GALAXY



Matt



STONE GALAXY

FINISH : MATT

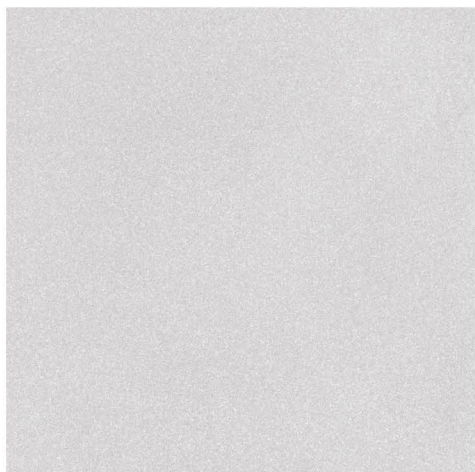
**15MM**  
THICKNESS

**600X600MM**

**FULL BODY**  
VITRIFIED TILES

---

**STONE GREY**



**Matt**



STONE GREY

FINISH : MATT

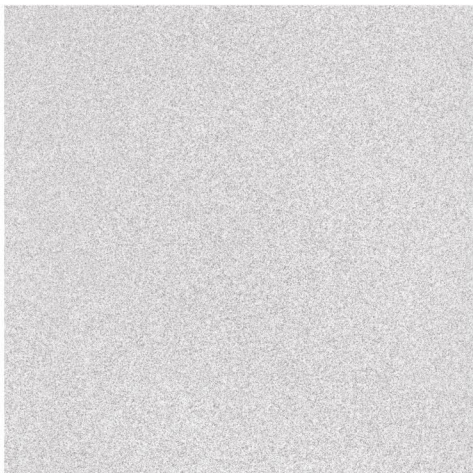
**15MM**  
THICKNESS

**600X600MM**

**FULL BODY**  
VITRIFIED TILES

---

# STONE GRIS



**Matt**



STONE GRIS

FINISH : MATT

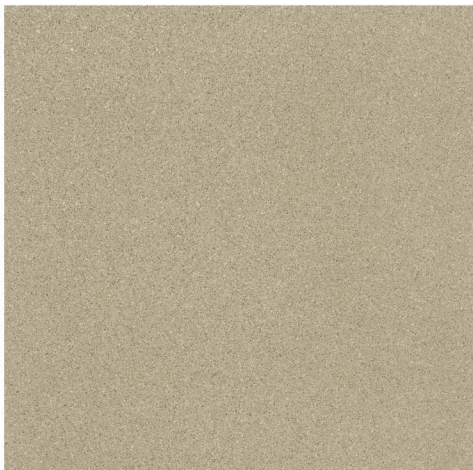
**15MM**  
THICKNESS

**600X600MM**

**FULL BODY**  
VITRIFIED TILES

---

# STONE VERDE



Matt



STONE VERDE

FINISH : MATT

**15MM**  
THICKNESS

**600X600MM**

**FULL BODY**  
VITRIFIED TILES

---

# PLAIN KOTA



Matt



PLAIN KOTA

FINISH : MATT

## MORE COLLECTIONS



# SIMOLEX

---

T I L E S

**Simolex Ceramic Pvt. Ltd.**

Survey no. 130, Nr. excel ceramic, 8A National highway,  
Makansar, Morbi - 363 642, Gujarat (India)

Call. +91 97242 84669 | +91 98989 45239

Email. [sales@simolex.cera@gmail.com](mailto:sales@simolex.cera@gmail.com)

[www.simolex.in](http://www.simolex.in)